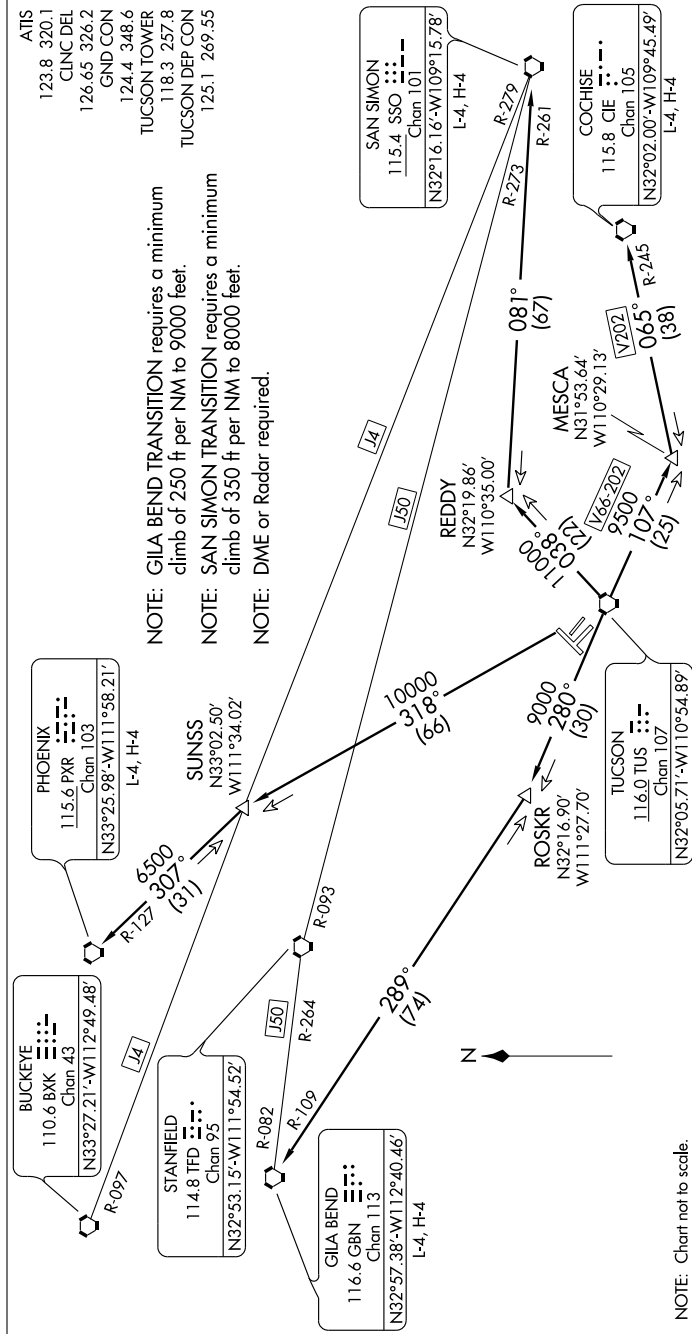


TUCSON SIX DEPARTURE

SL-430 (FAA)

TUCSON INTL (TUS)
TUCSON, ARIZONA

SW-4, 23 NOV 2006 to 21 DEC 2006



DEPARTURE ROUTE DESCRIPTION

TAKE-OFF RUNWAYS 3, 11L/R, 21, 29L/R: Fly assigned heading for vector to appropriate transition. Maintain 17 000 feet, or assigned lower altitude. Expect clearance to filed flight level 10 minutes after departure.

COCHISE TRANSITION (TUS6.CIE): From over TUS VORTAC via TUS R-107 and CIE R-245 to CIE VORTAC.

GILA BEND TRANSITION (TUS6.GBN): From over TUS VORTAC via TUS R-280 and GBN R-109 to GBN VORTAC.

PHOENIX TRANSITION (TUS6.PXR): From over TUS VORTAC via TUS R-318 and PXR R-127 to PXR VORTAC.

SAN SIMON TRANSITION (TUS6.SSO): From over TUS VORTAC via TUS R-038 and SSO R-261 to SSO VORTAC.

SUNSS TRANSITION (TUS6.SUNSS): From over TUS VORTAC via TUS R-318 to SUNSS INT.

SW-4, 23 NOV 2006 to 21 DEC 2006